

PORTABLE SIMULATOR



Portable Simulator Product Sheet – Desktop Features



Features of CBA Virtual Cockpit

CBA is built around an object-oriented approach that discards historical “cockpit/ownship-centric” design philosophies in favor of a design where all participants in the simulation, including the ownship, are peers.

Benefits include:

- ✓ Ability to remotely connect to and interact with any simulation participant
- ✓ Multiple simultaneous remote connections provides a network display repeater capability
- ✓ Ability for any participant to act as the ownship
- ✓ Ability for switching out participants of varying fidelities

The majority of CBA was implemented using the Java programming language and SDK.

This platform offers superior support for network centric object-oriented designs through platform independence and improved run-time stability.

Key benefits provided by Java include:

- ✓ Multi-platform support – Linux and Windows currently
- ✓ Improved code correctness
- ✓ Ease of maintenance
- ✓ Ability to locally or remotely download and execute pure Java simulation participants



FEATURES

Ideal For Deployment Training or Aggressor Stations

Portable Desktop Frame with Integrated Travel Case

Set-up In Minutes

Rack-Mount Computers Mounted

CBA - Virtual Cockpit Software

Network - DIS Ready - No Other License Needed

1 Instrument 20” LCD w/ Touch-screen

1 Out-the-Window 20” LCD with HUD Overlay

Thrustmaster® - Cougar USB Stick and Throttle

Quantum3D® Obsidian_nV 1 Channel Visual System

OPTION:

3 Channel Quantum 3D® Visual system

Desktop Frame configured for 3 - 20”LCD

30” LCD Displays Available For Visual And Instrument

PORTABLE SIMULATOR



Portable Simulator Product Sheet – Desktop Specifications

Desktop Specifications

Desktop Unit –
Aluminum Frame construction with Black plastic insert panels

Dell PowerEdge 1750 Rackmount Computer System
Dual 3.06GHz CPU with 512K cache and 533MHz FSB
Memory: 1GB DDR, 266MHz, 2X512MB
3Yr BRONZE Support, Next Business Day Onsite
Dual Onboard Network Interface Cards
1.44MB Diskette Drive
24X IDE CD-ROM
On-Board SCSI Controller
36GB, 10K RPM SCSI Hot Plug Hard Drive

Versa Rails for Non-Dell Rack
1X64bit/33MHz and 1X64bit/133MHz PCI
-X Riser
nVidia 5200 PCI Graphics Card
iMic USB Sound Generator

APC – 1U Rackmounted UPS 1000VA

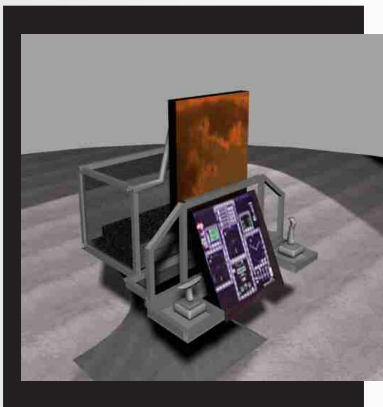
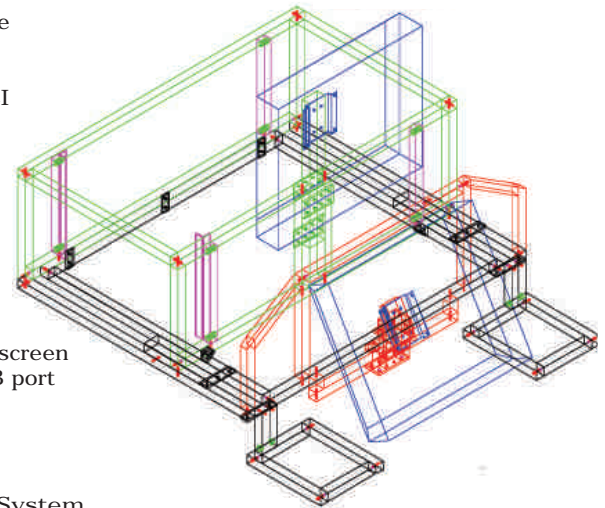
Touchscreen LCD
NEC 2080 20" TFT monitor with panel-mount bezel
Integrated Surface Acoustic Wave touchscreen
Internal touchscreen controller with USB port interface
Built-in speakers
1-Year Parts and Labor Warranty

Quantum 3D Obsidian Visual Scene System
Full-Scene, Sub-pixel Anti-Aliasing
Advanced AGP OpenGL Graphics Accelerator Graphics
Quantum3D Obsidian ®3 with nVSync™ Multi-Screen Synchronization Technology
64MB of DDR SDRAM Unified Memory
AGP 4x Bus Interface Supporting 7.3 GB/Sec Graphics Data Bandwidth
Hardware Full Scene AntiAliasing (FSAA)
32 Bit Color and 32 Bit Z/stencil Buffer
Integrated Transform and Lighting Engines
NVIDIA Shading Rasterizer, Enabling Real-Time Per Pixel Effects
Fog Effects: Radial, Elevation, Non-Linear
Unprecedented 3D Graphics Performance
Optional Real-Time Image Processing Board for IR and NVG Applications
Unique 1U Stackable, Rackable Custom Chassis
1 Year Return to Factory Standard Warranty
Obsidian3: Windows 2D, OpenGL 1.2 API and DirectX 8
Certifications FCC Class A, CE & ETL

NEC 20" LCD TFT Visual Scene Monitor mounted at Pilot Eyepoint
Optional 30" LCD TFT Visual Scene Monitor is available

ThrustMaster – Cougar USB Stick and Throttle

Integrated Travel Case –
No need to remove the simulator from the case
Dual function as a desk height or stand-up height table for the simulator
High Strength travel case with reinforced aluminum corners and hardware
Casters for easy moving



© 2003 Copyright ZedaSoft, Inc.
All rights reserved.
Information is subject to change without notice.
All trademarks are the property of their respective owners.